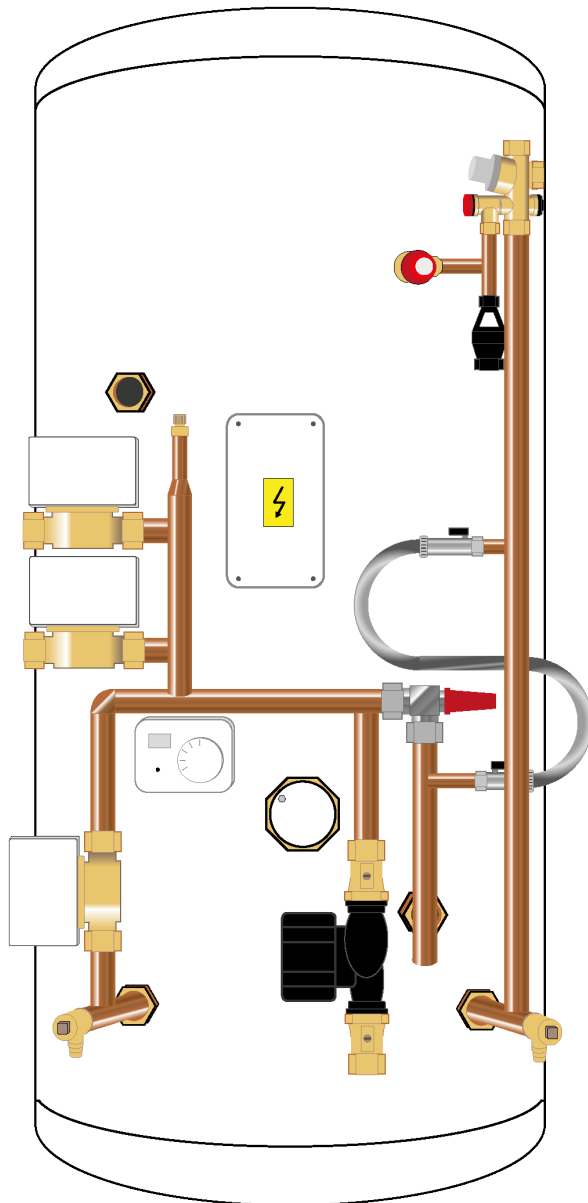


INDIRECT PRE PLUMB

INDIRECT PRE PLUMB - AVAILABLE ON ULTRAFLOW STANDARD, SLIMLINE & ULTRAFLOW AIR

Our superb range of indirect cylinders, both standard and slim diameter are available pre plumbed to suit either a system boiler (systemfit pre plumb) or a heat-only setup (standard pre plumb).

Each variant of our pre-plumb indirects saves time and money for the installer and allows uniformity in airing cupboards across differing sites. The components used are detailed opposite.



THE MODEL SHOWN HERE IS A TWIN ZONE PRE PLUMB INDIRECT, FOR USE WITH A HEAT-ONLY BOILER

TWIN ZONE PRE PLUMB

Standard Diameter - 545mm					
Heat-only Product Code	UIP150H	UIP170H	UIP200H	UIP250H	UIP300H
Systemfit Product Code	UIP150S	UIP170S	UIP200S	UIP250S	UIP300S
Capacity (L)	150	170	200	250	300

Slimline Diameter - 475mm				
Heat-only Product Code	UIPS120H	UIPS150H	UIPS170H	UIPS200H
Systemfit Product Code	UIPS120S	UIPS150S	UIPS170S	UIPS200S
Capacity (L)	120	150	170	200

The indirect pre plumb cylinders come provided with a 6m head circulating pump, 22mm bypass valve, filling loop, primary expansion vessel and 3x 22mm two-port zone valves for twin zone heating and DHW.

See page 16 for physical examples of these kit parts.

Systemfit models for use with system boilers are provided with the same world-class components as our regular twin zone pre plumb, except with the absence of a filling loop, 6m head pump, and primary expansion vessel, as these are all provided within the boiler.

Internal expansion Ultraflow Air pre plumb cylinders, in single or twin zone, heat-only and systemfit are all available on request.

Single zone/Triple zone pre-plumbs in both heat-only and systemfit formats are available on request